

Colour range
01-01-2017

DUROPAL

thermopal

PFLIEDERER



U1026 MP | Crystal white



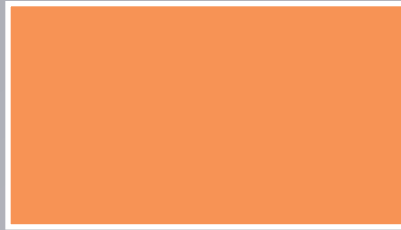
U1331 MP | Beige grey



SR204 MP | Manhattan



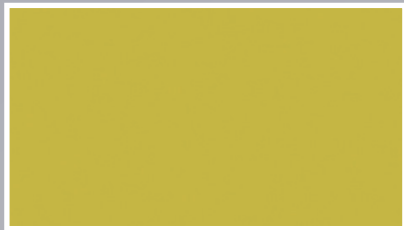
U194 MP | Zinc yellow



U1667 MP | Orange



U225 MP | Signal red



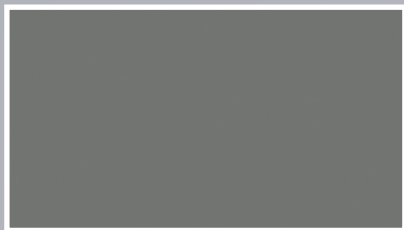
U110 MP | Iguana



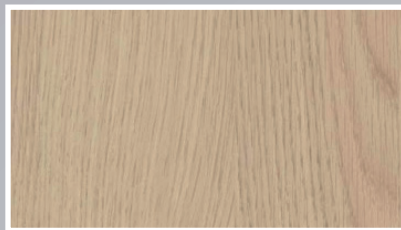
U079 MP | Pacific



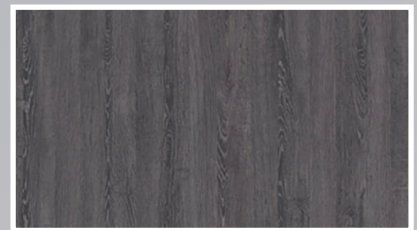
U068 MP | Sky blue



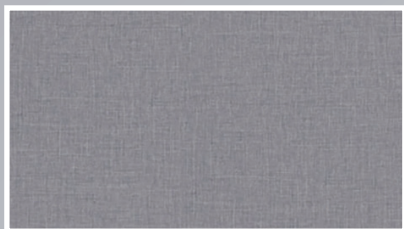
U1290 MP | Anthracite



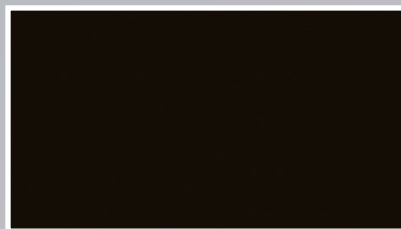
R4223 MP | Lindberg Oak*



Fo6-184 MP | Odeon Oak*



F7505 MP | Twist Platina grey



U007 MP | Graphite black

*Additional costs upon request.

Colours are approximate. Colours may subject. Other colours available upon request.



FSC products on request



Hermeta
P.O. Box 1017,
4147 ZG Asperen
1e Industrieweg 1,
4147 CR Asperen The Netherlands

e-mail: info@hermeta.nl
internet: www.hermeta.nl

HAPPY PEOPLE,
BEAUTIFUL PRODUCTS

