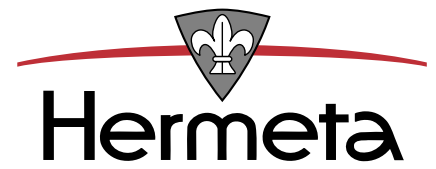




**BOUW- EN
MEUBELBESLAG**



HAKEN EN KAPSTOKGARNITUREN

HAKEN UND GARDEROBENLEISTEN

HOOKS AND COAT RACKS

CROCHETS ET PORTE-MANTEAUX



art. 0804



art. 0026/0027



art. 0032/0033



art. 0148/0149



art. 0551/0553



art. 0028/0029



art. 0138/0139



art. 0555/0557/0559



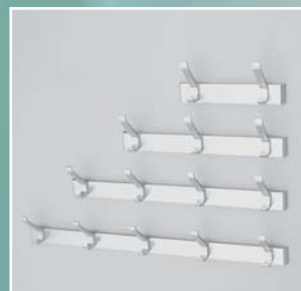
art. 0663/0665



art. 0840/0860/0870



art. 0560



art. 0882/0883/0884/0885



art. 0652/0653/0654/0655



art. 0862/0863/0864/0865

HAKEN EN KAPSTOKGARNITUREN

HAKEN UND GARDEROBENLEISTEN

HOOKS AND COAT RACKS

CROCHETS ET PORTE-MANTEAUX




Hermeta

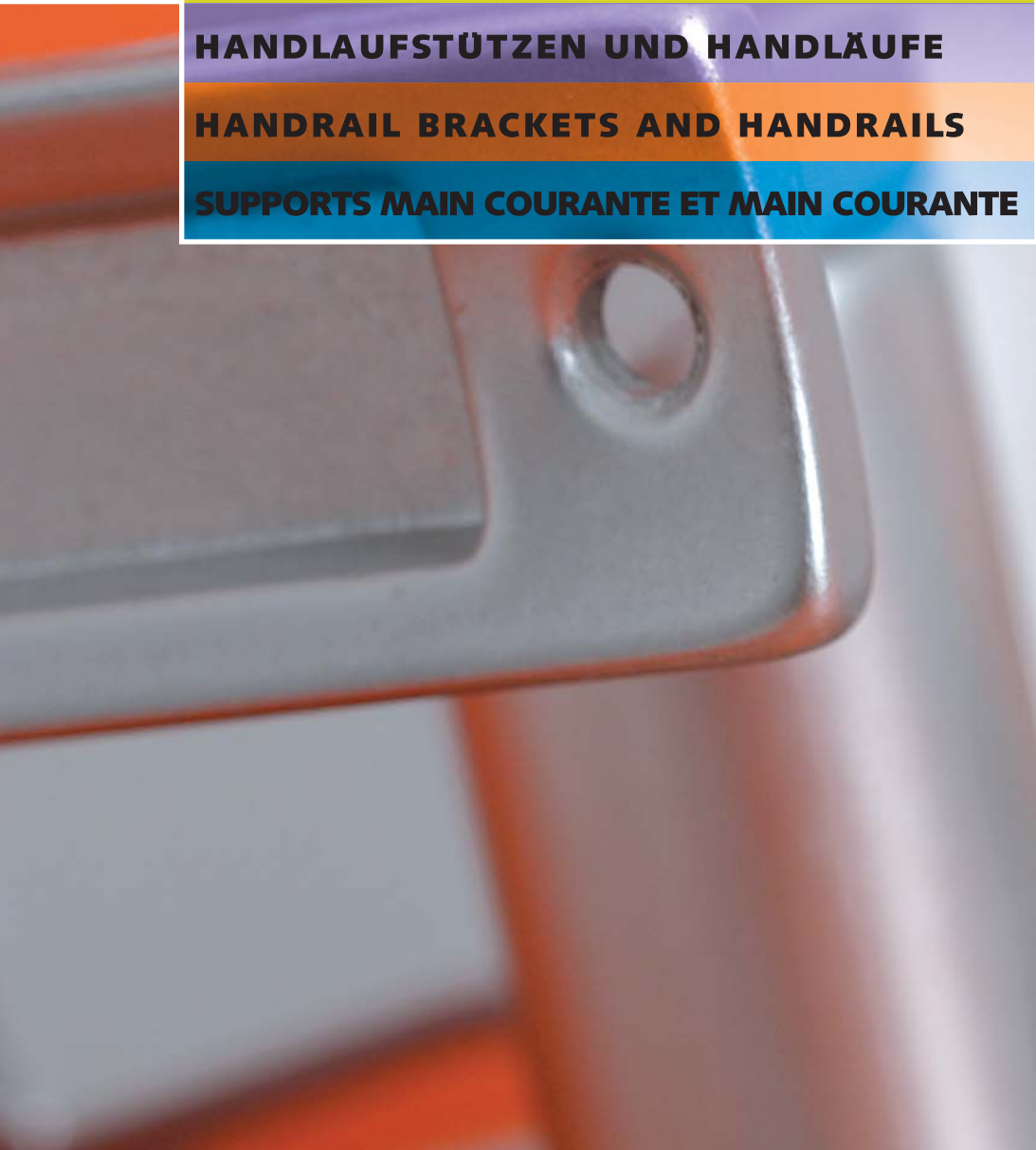
art. 0811

LEUNINGHOUDERS EN WANDLEUNING

HANDBLAUFSTÜTZEN UND HANDLÄUFE

HANDRAIL BRACKETS AND HANDRAILS

SUPPORTS MAIN COURANTE ET MAIN COURANTE




Hermeta

art. 3502/3503



art. 3510/3515



art. 3542/3543



art. 3500/3501



art. 3547/3548



art. 3570/3585



art. 3580/3581



art. 3730/3731/3732/3733



art. 3751/3752/3753



art. 4231/4232/4233



art. 4330/4335



art. 4560



art. 4200/4201/4203/4204/4205



art. 4255/4256/4257/4258



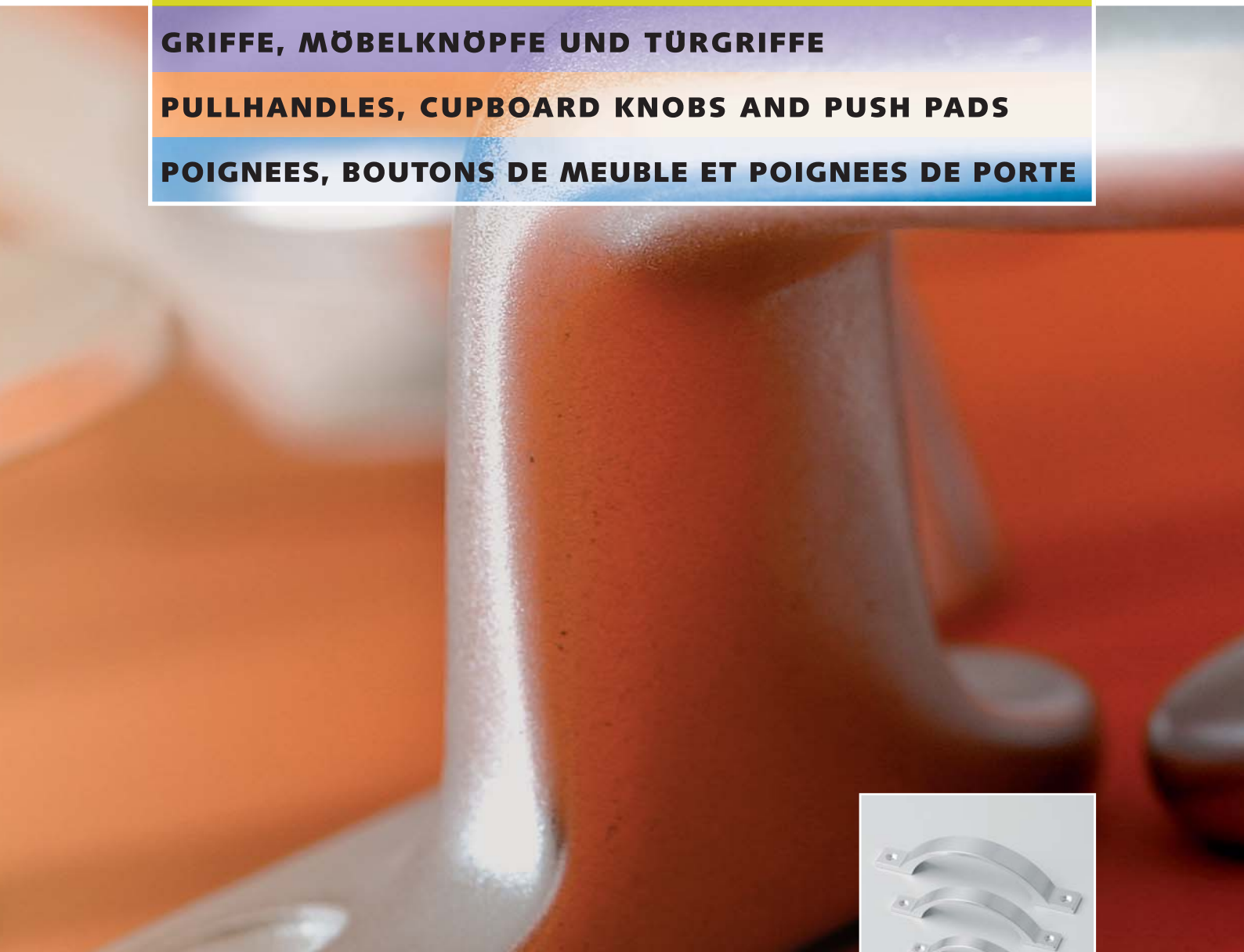
art. 4260/4265/4268/4270

GREPEN, MEUBELKNOPPEN EN DEURDUWERS

GRIFFE, MÖBELKNÖPFE UND TÜRGRIFFE

PULLHANDLES, CUPBOARD KNOBS AND PUSH PADS

POIGNEES, BOUTONS DE MEUBLE ET POIGNEES DE PORTE




Hermeta

art. 4221/4222/4223

DIVERSEN

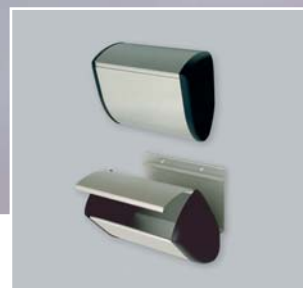
VERSCHIEDENES

MISCELLANEOUS

QUINCAILLERIE DIVERS



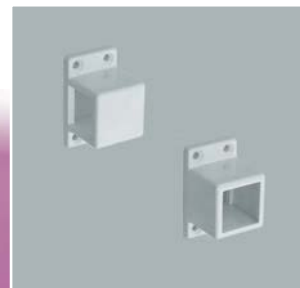
art. 5110/5111/5113



art. 3275/3280



art. 3650



art. 3670/3675



art. 1030/1032/1040/3600



art. 1010/1011



art. 5504/5505/5506



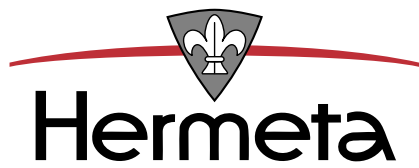
art. 3370



art. 3350/3355/3360/3361



art. 4700/4702/4704/4709/4750



Hermeta

P.O. Box 1017,
4147 ZG Asperen
1e Industrieweg 1,
4147 CR Asperen, The Netherlands

e-mail: info@hermeta.nl
internet: www.hermeta.nl